

Other Disposal Options

Charitable Donations

We encourage you to help those less fortunate by donating your re-useable bulky items through charitable organizations and thrift stores.

Freecycle

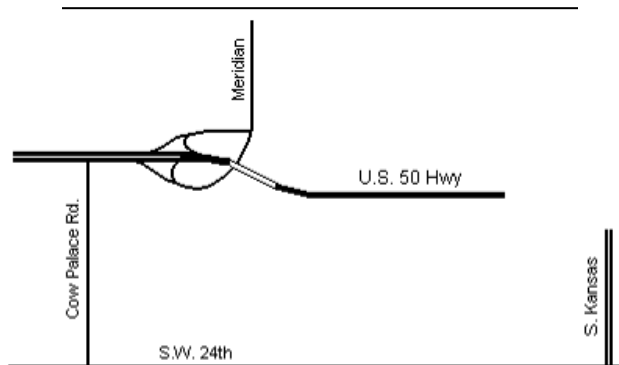
If you want to give away an item for free, join the Newton Freecycle group online at groups.yahoo.com/group/NewtonFreecycle or the Facebook group Harvey County Free Zone to list your item.

Scrap Metal

Most metal is very recyclable and can be disposed of through local scrap dealers.

Grass Clippings & Leaves

Yard waste such as lawn and garden clippings should be either mulched or taken to the Harvey County Transfer Station for composting. It's free!



Harvey County Transfer Station
3205 S.W. 24th
283-5439

Bulky waste disposal services are restricted to residential use within the Newton city limits. You must be an active City sanitation customer, you must have the account in your name, and you must be the owner or occupant of the property.

Some waste may be unsuitable for disposal with these services. Check the type of service you intend to use for a more detailed listing. Unauthorized materials that are collected undetected will be returned to the property.

Waste materials generated from work performed by a contractor will not be collected. The contractor is responsible to arrange for appropriate private disposal.

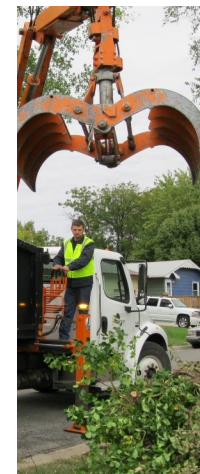
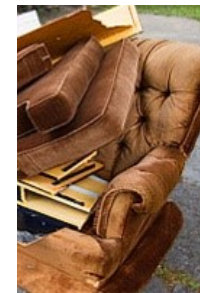
Participation may be declined if the resident is delinquent on a utility bill.



City of Newton
Department of Public Works
Sanitation Division
P.O. Box 426
Newton, KS 67114-0426
(316) 284-6070

www.newtonkansas.com/sanitation

Printed on recycled paper



Bulky Waste Disposal Services



Reduce • Reuse • Recycle

2016 Edition

Whatever your bulky waste disposal need — we can help!
Call 284-6070 or visit www.newtonkansas.com/bulkyitem to order

Bulky Item Pickup



Bulky item pickup is available to residential customers for \$10 per pickup. It may be used for the disposal of furniture, tree limbs, appliances, televisions, carpeting and other large items. Bulky items are picked up on a first-come, first-served basis, usually on your regular collection day.

- Schedule your pickup at least one day before your regular collection day. Call 284-6070 or go online at www.newtonkansas.com/bulkyitem. **Please note:** You will need your City utility account number to place an order.
- Place bulky items near your trash cart, allowing at least 3 feet of separation. Items may be set out after 5 p.m. the evening before, but not after 7 a.m. on your collection day.

The following items cannot be collected as bulky item pickup: Regular trash or recyclables, construction materials, automobiles, hazardous waste, tires larger than passenger cars/trucks, or any waste from a contractor, including tree limbs. There is a limit of 5 items per pickup.

Roll-off Dumpster Rental

Doing a major home improvement project?

Rent a 10-cubic-yard roll-off Dumpster for:

- Remodeling Debris
- Roofing Materials
- Trees & Brush
- Dirt, Rock & Concrete Rubble
- Other Bulk Materials

Roll-off Dumpsters have a 14-day rental limit. They cannot be used for disposal of regular household trash, recyclables or hazardous materials. Contact the Sanitation Division at 284-6070 for availability. The charge will be included on your next utility bill.

Rates:

\$25 Delivery

\$50 Each Dump + Landfill Fee



Landfill Coupons



Want to haul it yourself? We'll pay the disposal fee!

Use a landfill coupon when you haul your load to the Harvey County Transfer Station, and the City of Newton will pay the fee.

Coupons are available at the water billing office at City Hall, 201 E. 6th St. Coupons may be used anytime throughout the year and will expire on December 31 if not used. There is a limit of two coupons per household per calendar year.

Waste must be carried in passenger cars, pickup trucks with 3/4-ton rating or less, or trailers less than 10 feet in length. A truck and trailer combination counts as two loads.

Present your coupon upon entering the transfer station.

All rules and regulations established by the Harvey County Transfer Station must be observed.