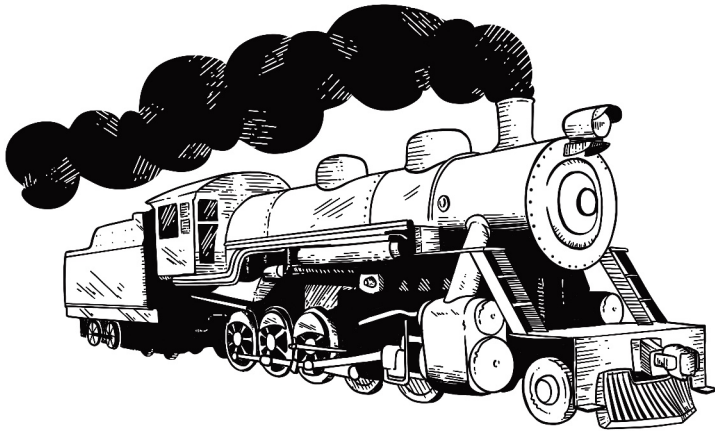


HISTORIC **NEWTON**

*COLORING AND
ACTIVITY BOOK*





DOWNTOWN NEWTON HISTORIC WALKING TOUR COLORING & ACTIVITY BOOK

*A publication of Newton/North Newton Historic
Preservation Commission
and Newton Convention & Visitors Bureau*

Illustrations by Dylan Palmer

Page design and text by Melody Spurney, Newton Convention & Visitors Bureau Director

Special assistance by Rebecca Likiardopoulos, Historic Preservation Officer

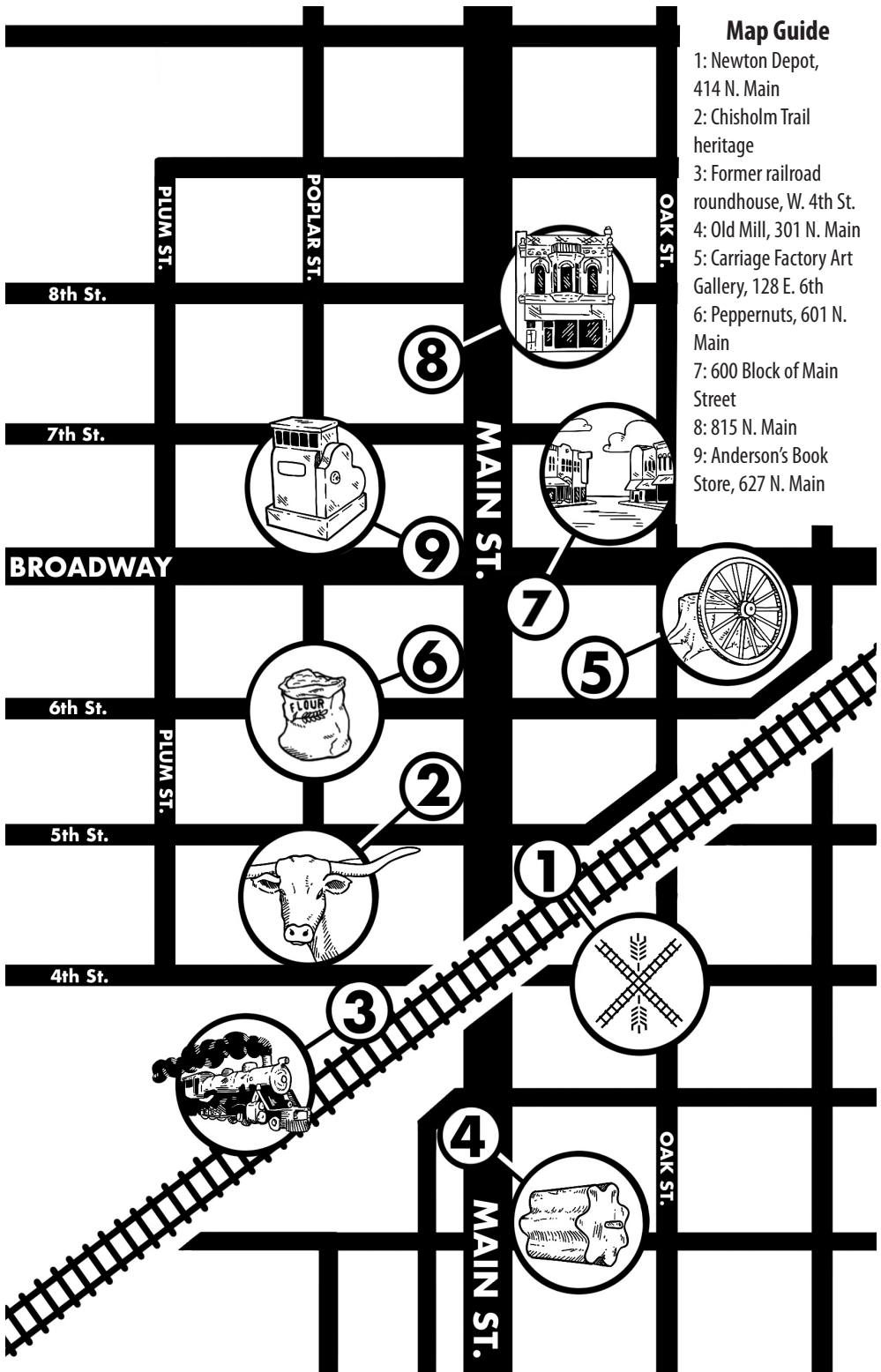
Special thanks to: Kris Schmucker, Harvey County Historical Museum Curator and
Catherine Groves, Harvey County Historical Museum Director



Newton Convention & Visitors Bureau

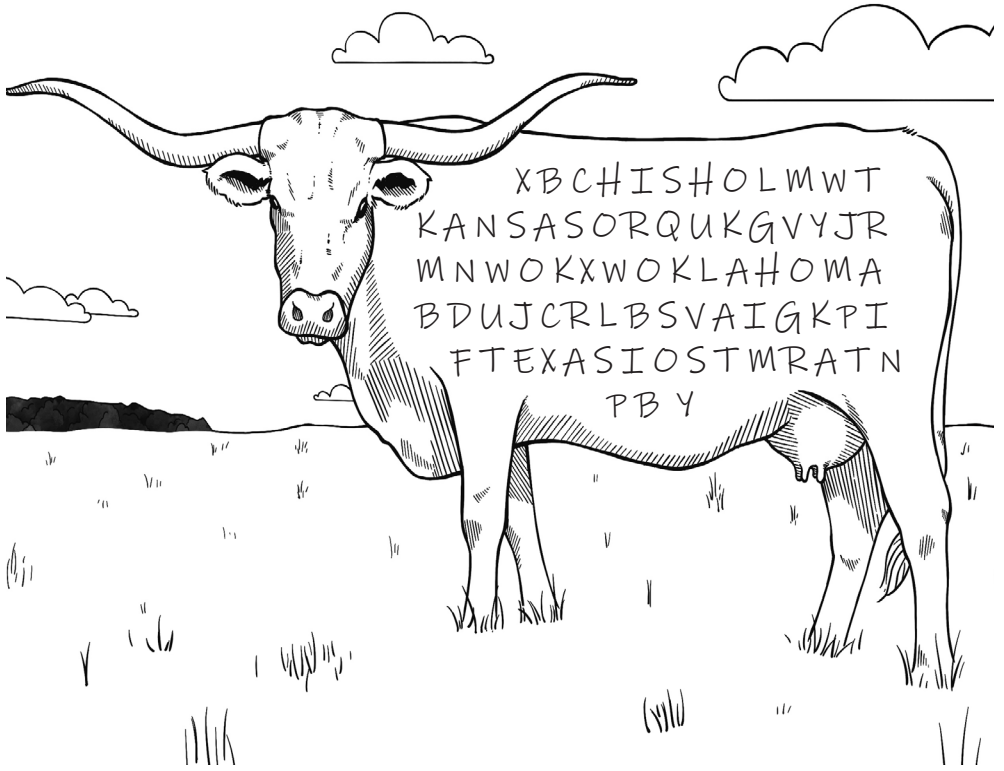
Map Guide

- 1: Newton Depot, 414 N. Main
- 2: Chisholm Trail heritage
- 3: Former railroad roundhouse, W. 4th St.
- 4: Old Mill, 301 N. Main
- 5: Carriage Factory Art Gallery, 128 E. 6th
- 6: Peppernuts, 601 N. Main
- 7: 600 Block of Main Street
- 8: 815 N. Main
- 9: Anderson's Book Store, 627 N. Main



Did you know?

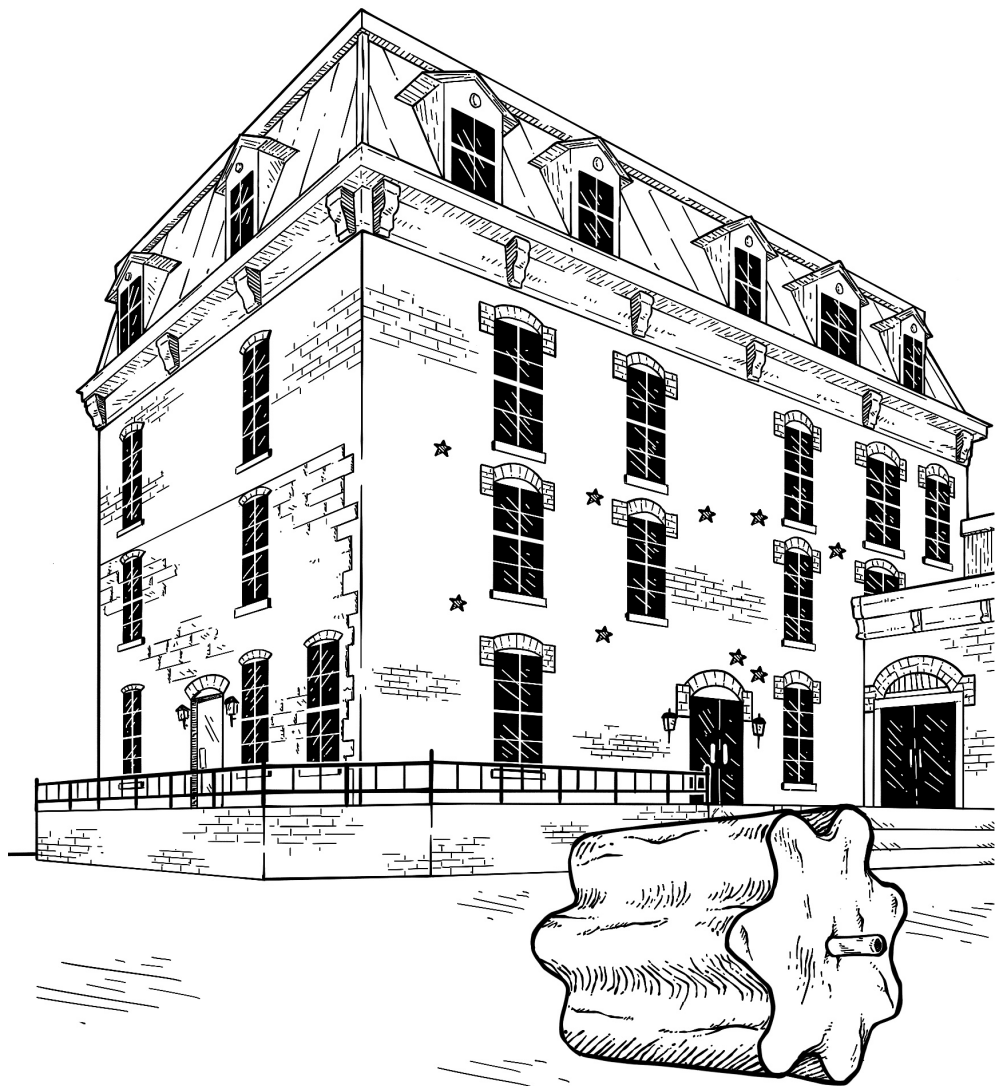
Cowboys drove longhorn cattle from Texas to Kansas along the Chisholm Trail in the 1800s. Cows boarded trains in Newton in 1871 to be sent east.



Can you find the following words hidden in the letters on the longhorn?

Chisholm
Cowboy
Kansas

Oklahoma
Train
Texas



Did you know?

The Old Mill was built in 1879 and was originally called Monarch Mill. Bernhard Warkentin purchased the building in 1886 and renamed it Newton Milling Co. It was saved from demolition and restored in the 1970s.

Can you guess how many pounds of wheat could be processed into flour at the mill each day?

A. 98,000

B. 10,000

C. 250

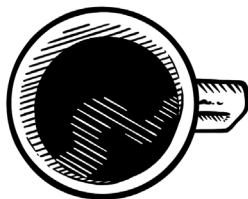
D. 50,000

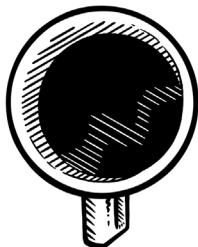
Answers are found on the back cover.

Did you know?

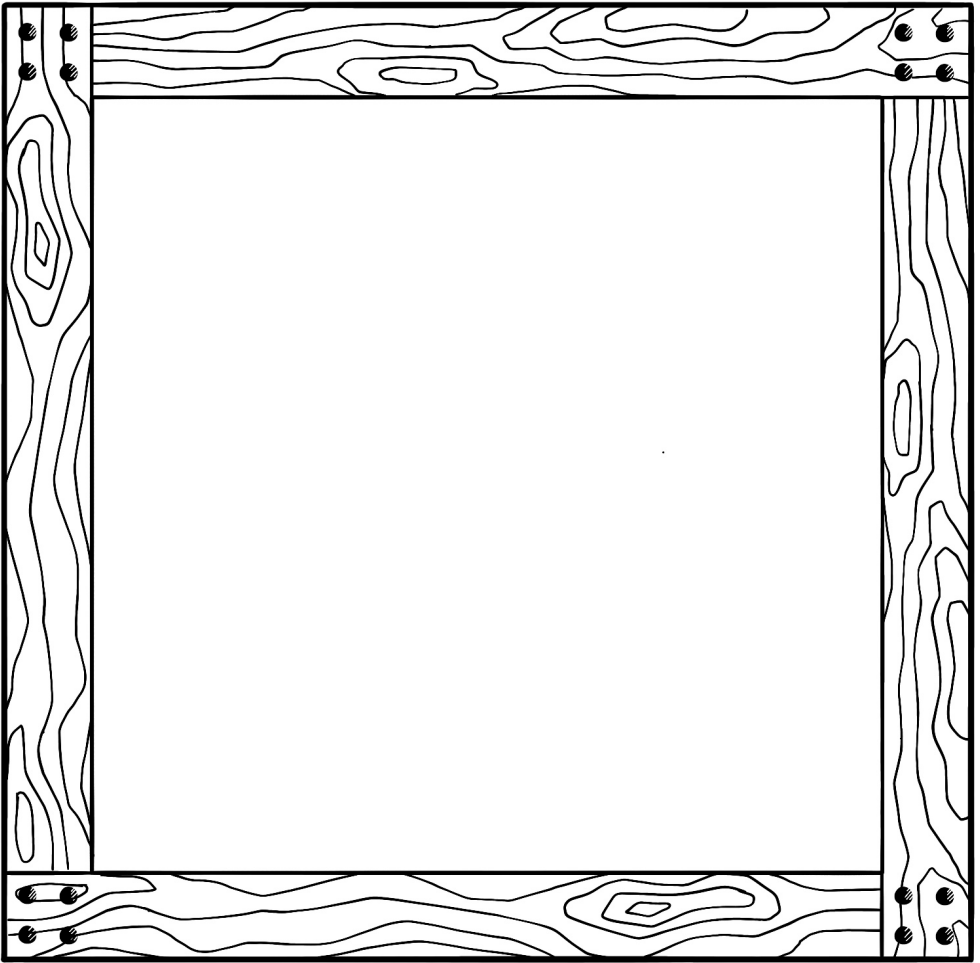
Harvey Girls served food and drinks to train passengers. A Cup Code told them what drinks were preferred. Handle pointed to noon meant black tea. Handle at 3 o'clock meant green tea. Handle at 6 o'clock meant orange pekoe. If the cup was removed the customer wanted milk.





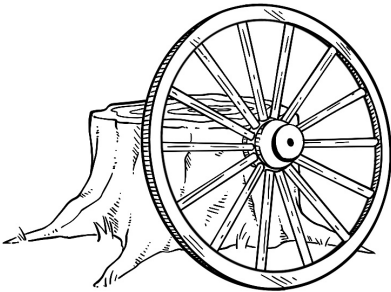


Can you name the drink that a Harvey Girl would serve shown for each cup ? What if a cup was missing on the table?



Take a rubbing or draw the Santa Fe Railroad logo.

A Santa Fe logo is displayed on the back wall at Carriage Factory Art Gallery, 128 E. 6th, located in the former factory. It is on the left side of the door about 1 foot above the ground. A carriage is on display inside the gallery. Admission is free.

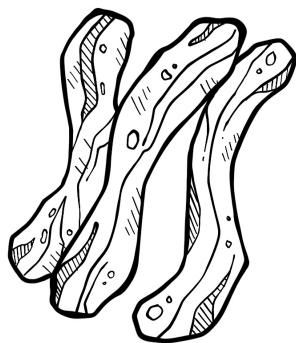


Carriages

John Jacob Krehbiel made carriages in this building and helped found Bethel College. His son Albert Krehbiel became a well-known American artist.

Did you know?

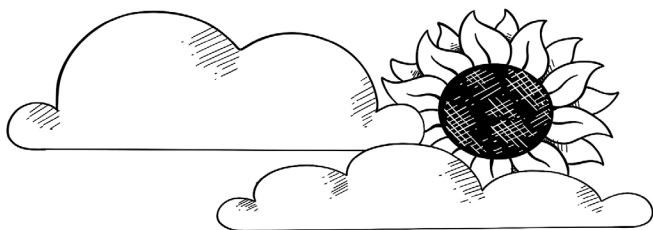
Peppernuts (Pfeffernüsse) are tiny spice cookies that are a tradition in German Mennonite households. They are often thought of as a Christmas treat and are about the size of a dime. You can taste peppernuts at *Prairie Market & Deli*, 601 N. Main, and watch them being prepared in the special Peppernut Kitchen.



Can you find the ingredient that isn't used in peppernuts?

Did you know?

Newton's Main Street is a National Historic District. It has several unique features on or inside the buildings.



Entrance sign: Part of the sign for Guesthouse Cafeteria is still beneath an awning at 610-612 Main Street. It was one of the first buffet-style restaurants in Kansas when it opened.



Burglar alarm: The owners of a financial services company installed a burglar alarm and a vault in 1919 to protect the contents of their building at 616 N. Main Street.

Can you find the items pictured below inside the drawing or on a visit to Main Street?



Sunflower detail: Sunflowers can be found on the front of the green building also known as the Terra Cotta building at 611 N. Main Street. Look up to find it in the drawing.



Norm's: This turquoise bull brightens the day for customers to his namesake coffee shop, Norm's, at 613 N. Main Street.

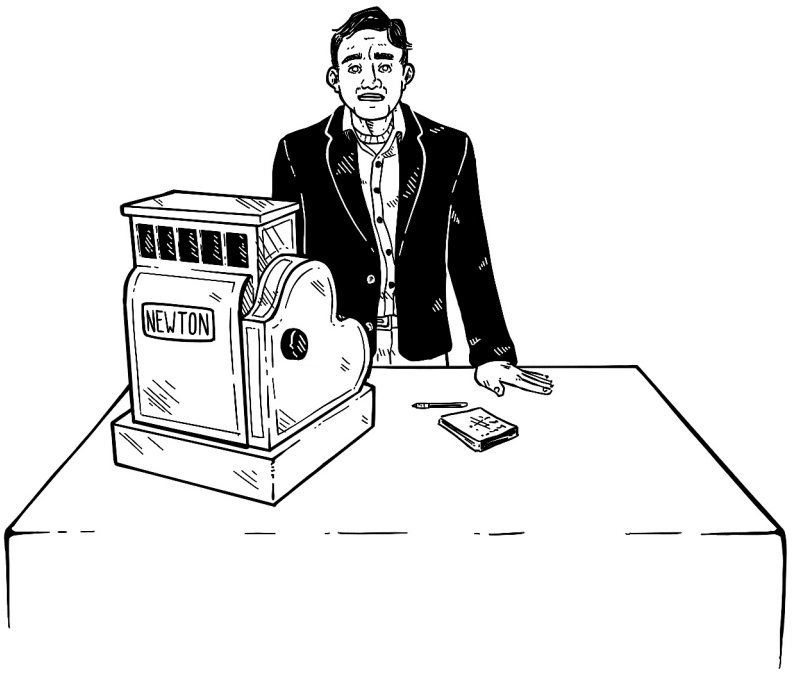


Did you know?

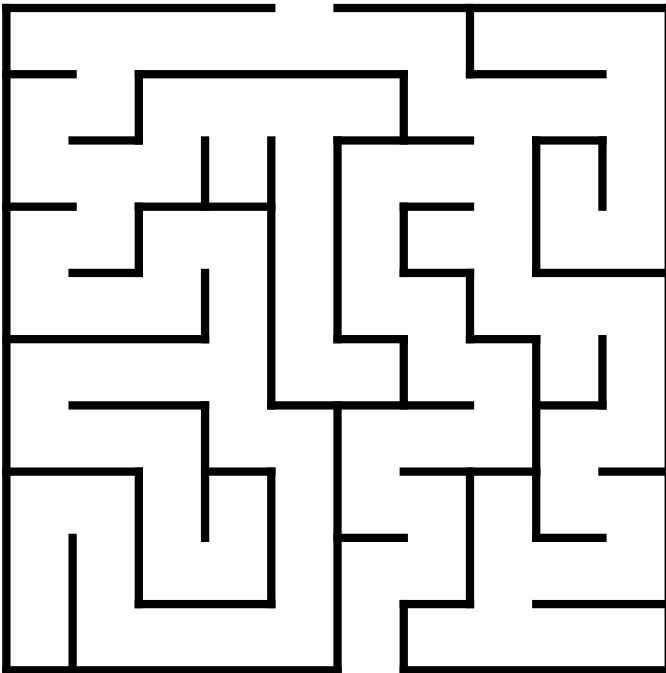
The building that formerly stood at 815 N. Main was home to the first Hispanic-owned business on Main Street, Cuellar Sewing Shop.

Can you match these common English sewing words to their Spanish translations?

- | | | | |
|-----------|-------------|-----------|---------------|
| 1. Needle | A. el hilo | 4. Skirt | D. Pantalones |
| 2. Thread | B. botón | 5. To sew | E. Falda |
| 3. Button | C. la aguja | 6. Pants | F. Coser |



Start



Finish

Did you know?

Newton's oldest business is more than 125 years old. Anderson's opened in 1892 and sold newspapers and snacks to train passengers. The Anderson family still owns the shop.

Can you find your way through a maze of store shelves?



Did you know?

The building that is today the Fox Theatre originally opened in the winter of 1914 following a fire. The first movie was "A Fool There Was."

Can you unscramble these movie-themed words?

1. ECNESR _____

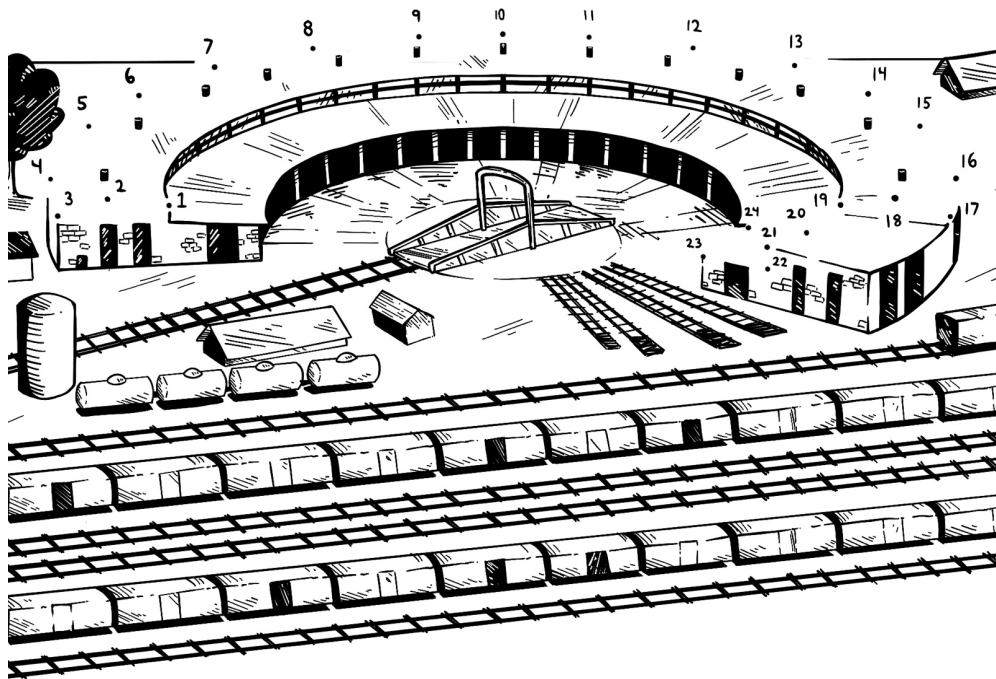
2. CPROPON _____

3. SRATSEC _____

4. LIMF _____

Did you know?

The original Santa Fe roundhouse was built in 1871 when the railroad first arrived in Newton. It closed in 1891 when the railroad headquarters moved to Nickerson. In 1897, the Nickerson roundhouse was moved brick by brick back to Newton, providing 32 stalls. It was officially closed January 1, 1955, and later torn down. Today, only the turntable remains and can be seen just west of Main and Fourth streets.



Can you connect the dots to rebuild the Santa Fe Roundhouse?

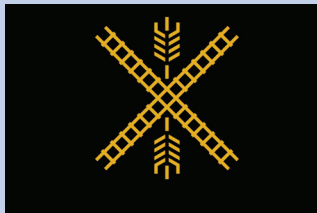
Explore Downtown Newton!

Exploring downtown Newton is like taking a step back into history. Many buildings in this National Historic District were built in the late 1800s and early 1900s. This activity book is for kids to enjoy hands-on learning along the route. It is a companion to the **Historic Newton Downtown Walking Tour**. Both guides are available at various locations in downtown Newton and by request.

Newton/North Newton Historic Preservation Commission
newtonkansas.com/historic

Newton Convention & Visitors Bureau
201 E. 6th St., Newton, KS 67114 • 316-284-3642
ToNewton.com

Harvey County Historical Museum
203 N. Main St., Newton, KS 67114 • 316-283-2221
HCHM.org



Answers: Page 4: 98,000 pounds. Page 5: Top: Black Tea; Middle: Green Tea; Bottom: Orange Pekoe; Missing: Milk. Page 7: Bacon. Page 10: 1-C; 2-A; 3-B, 4-E, 5-F, 6-D. Page 12: 1. Screen; 2. Popcorn; 3. Actress; 4. Film.

This 2020 activity book was a project of the Newton/North Newton Historic Preservation Commission and Newton Convention & Visitors Bureau with assistance from Harvey County Historical Museum. This project has been financed in part with Federal funds from the National Park Service, a division of the United States Department of the Interior, and administered by the Kansas State Historical Society.