

where possibilities begin...

NEWTON
PUBLIC LIBRARY



GLMVArchitecture

HB+M

FEBRUARY 23, 2010

PROCESS



Process

An outline of the steps taken to complete the Concept Design

STEP 1 INTRODUCTION & GATHER INFORMATION

- Collected available information and data
- Project Kick-off Meetings with Library Board and Facilities Committee
- Toured the existing library and met with staff

STEP 2 STAFF QUESTIONNAIRES

- Questionnaires developed specifically for this project
- Responses were analyzed and summarized

STEP 3 FOCUS GROUPS

- Developed questions / talking points specifically for this project
- Conducted 7 sessions with a cross section of stakeholders
 - Technology Group, Educators, Community School Board, Seniors, Young Professionals, City Officials, Planning Commission, General Users, Parents of Young Children, Meeting Room Users, Ministers, Library Staff, Library Board, Second Century Board, Florence Bessmer Board, Friends of the Library, Chamber, Teens
- Analyzed and summarized information

STEP 4 CONCEPT DIAGRAMS

- Series of diagrams to test ideas for expanding the library

Process

An outline of the steps taken to complete the Concept Design

STEP 5 REFINE CONCEPT DIAGRAMS & SET DIRECTION

- Refined concept diagrams to compare addition / remodel solutions vs. building new
- Developed collection statistics to project growth

STEP 6 PRELIMINARY CONCEPT DESIGN

- Developed preliminary concept designs for a new library building
 - Site layout relationships
 - Floor plan arrangement of spaces for flow & adjacencies
 - Preliminary ideas for the building form

STEP 7 REFINE CONCEPT DESIGN

- Refined concept design based on feedback
- Developed preliminary presentation materials including:
 - Site Plan showing ideas for the whole park site
 - Floor Plan indicating layout of shelving & furniture
 - Reference photos for building materials
 - 3D concept images for the new library building; exterior and interior

Process

**An outline of the steps
taken to complete the
Concept Design**

- STEP 8** **PRESENT CONCEPT DESIGN TO LIBRARY BOARD & STAFF**
- Refine concept design and presentation materials based on feedback

- STEP 9** **PUBLIC PRESENTATIONS**
- Present to City Commissioners
 - Public presentation; update the community and review how their input has been implemented

An architectural rendering in a dark, monochromatic style. The scene depicts a modern building with a prominent, cantilevered upper section supported by a complex structural frame. In the foreground, a public plaza is shown with several people engaged in various activities: a woman walking a child, a man walking with a briefcase, and a group of people sitting on a long, low, textured bench. The background features more of the building's structure and large, leafy trees. The overall atmosphere is one of a vibrant, modern urban environment.

A NEW BUILDING VERSUS AN ADDITION / REMODEL

Why a New Building

1. **The existing building has issues with the condition of the building envelope and systems that require significant improvements and cost**

- Much of the pre-cast concrete has open joints and exposed, rusted reinforcing
- Windows have deteriorated with cracked or broken seals
- Walls and roof are poorly insulated
- Potential water ponding issue on the roof could result in eventual roof failure
- Structural systems not designed to meet current codes for earthquake and wind loads
- Much of the mechanical systems are original equipment and have reached the end of their useful lives
- The plumbing systems are showing signs of deterioration
- The electrical systems, although functioning, do not meet current codes
- Stair and mechanical room enclosures are not code compliant

Why a New Building

- 2. More parking is needed to serve the library and public properties. The location of the existing building forces parking in a location that does not serve the City's needs**
- 3. The existing building does not meet ADA requirements in the following areas:**
 - Elevator - Size, Controls, Signals
 - Stairs - Handrails, Risers, Rescue Assistance Area
 - Restrooms - Clearances, Fixtures
 - Building Access - Entrance Sidewalk Grade, Loading Ramp Incline
- 4. A new library will have current mechanical and electrical systems that will reduce operating costs and energy consumption**
- 5. A new library will incorporate current sustainable technologies and controls to minimize operating costs**

Why a New Building

- 6. The new library will be designed to include features that reduce maintenance costs including:**
 - Long life, efficient lighting
 - Durable, easily maintained finishes
 - Efficient mechanical and plumbing systems
 - No elevator
 - Hands-free restroom fixtures


- 7. A new building will be more energy efficient, utilize more natural light, and reduce operating costs**

- 8. A 1-story building will allow for future flexibility and reduce staffing requirements**

- 9. Phasing the construction for an addition / remodel to keep the library open is an added cost with no lasting benefit**

- 10. The cost of a new library is the same, if not less than, adding onto and remodeling the existing library building, plus ongoing operating costs will be less in a new building**

- 11. A new library will be an identifier for the City of Newton and a major destination for all that visit and live here**

An architectural rendering of a public plaza. On the left, a large building with a prominent, cantilevered roof structure is shown. The plaza features a paved walkway, several people walking, and a large, multi-level seating area made of concrete blocks. In the background, there are more buildings and large trees. The overall scene is a detailed black and white line drawing.

PUBLIC FOCUS GROUP COMMENTS

Public Focus Group Comments

SITE

- Main building entry should be convenient to the parking lot
- Would like to have drive-up services
- Patron drop-off / place for parents to drop their kids off
- Outdoor reading area / concert space / conference space / program area with power
- Should have views to the park from inside the building

WHAT SHOULD YOU SEE FIRST UPON ENTERING THE BUILDING?

- Wow factor
- Friendly face / staff nearby
- Bigger sweeping views, less clutter, open space

WHAT SHOULD THE LIBRARY LOOK LIKE FROM THE OUTSIDE?

- Lots of windows providing natural light and views of the park
- An element of the unexpected / breathtaking / refreshing
- A nod to the Carnegie library and the Downtown historic district
- Combination of traditional and contemporary
- Inviting / exciting
- Use of multiple materials - consider stone / not just brick

WHAT SHOULD THE LIBRARY LOOK LIKE FROM THE INSIDE?

- Inviting
- Open layout
- Natural lighting incorporated into the design
- Warm / cozy / homey
- More stimulating colors / more brightness
- Higher ceilings

Public Focus Group Comments

COMMUNITY MEETING SPACES

- Provide more Meeting Room options / multiple rooms of varying sizes

CAFÉ

- Work with Friends of the Library
- Consider vending machines in a specific area but not visible

SEATING

- More tables either round or square
- Would like to see soft seating throughout the building

TECHNOLOGY

- Monitored Computer Lab set up for public computers instead of clusters on the floor
- Self-check machines in the Circulation area
- Powered tables for laptop use

DISPLAY

- Flexible, moveable, displays

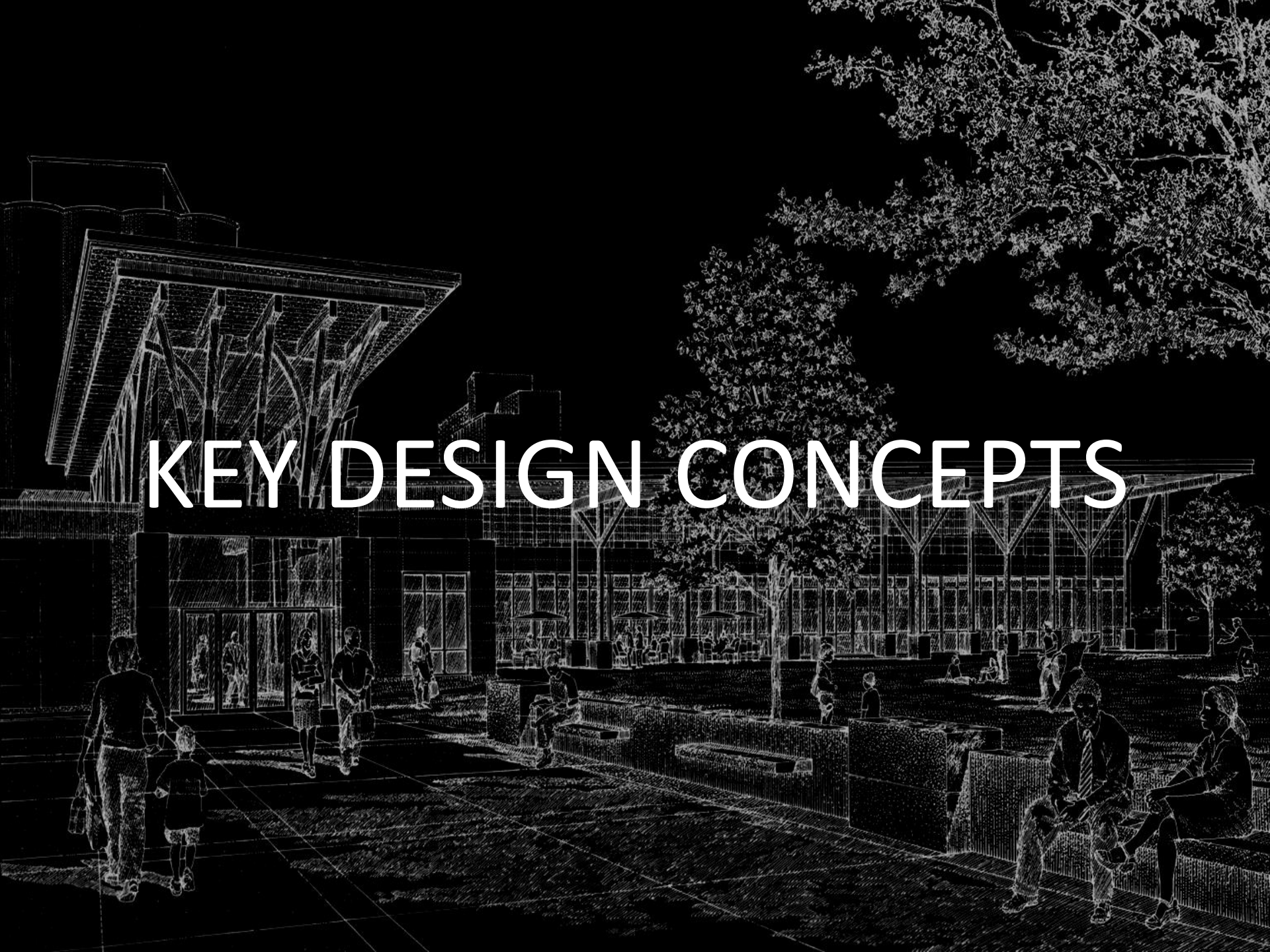
LARGE PRINT

- This area should be easy to locate and access

YOUNG ADULT

- Should have their own defined and attractive area
- Gaming space and equipment
- Should have separate Young Adult area computers

KEY DESIGN CONCEPTS



Key Design Concepts

SITE

- Frame the park
- Create a presence on Broadway
- Relationship to Downtown
- Lower parking / raise building to keep headlights off park
- Phasing

EXTERIOR

- Architectural cues from Downtown, History, and Park with modern interpretation
 - Railroad town - train shed
 - Park - trees / organic forms
 - Columns - strong, classic, regular rhythm
 - Columns to trees / structure to train shed
 - Stone / timber
- Strong, simple form
- Identifier for Newton
 - Presence on Broadway
 - Relate to Downtown
 - Relate to park
 - Strong form balances with silos

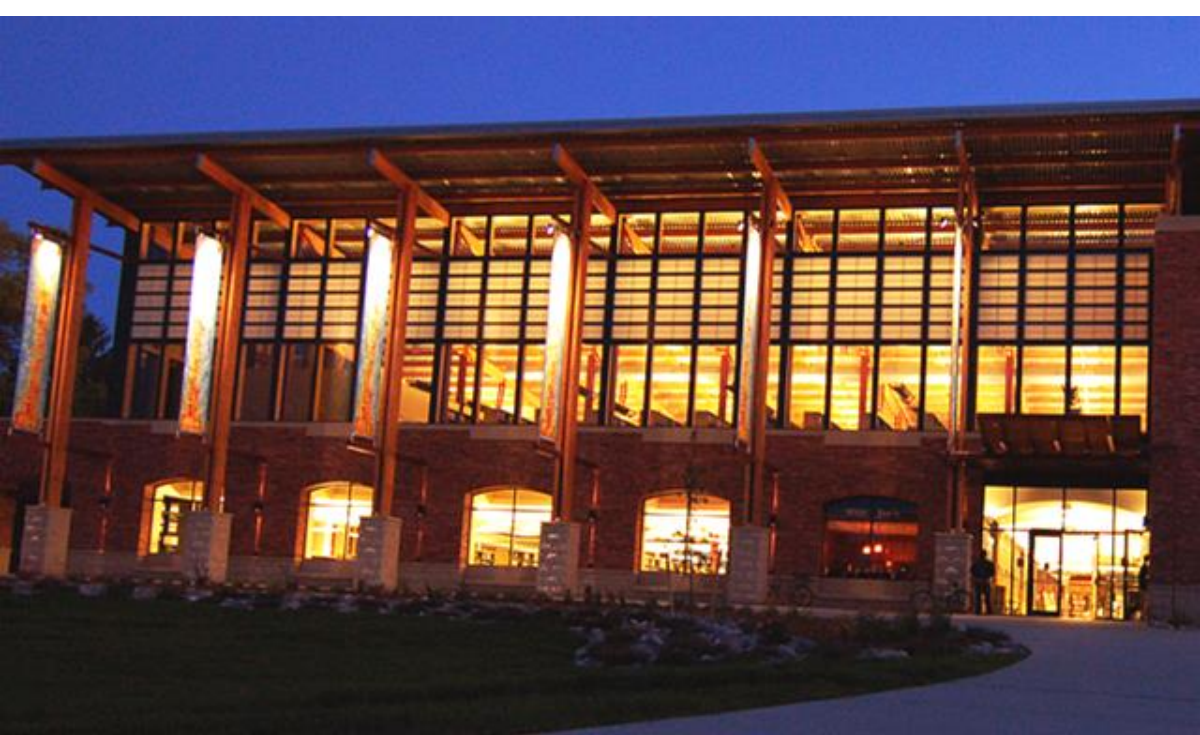
INTERIOR

- Open, inviting, draws you in
- Relates to the park
- Plenty of daylight
- Warm and cozy
- Flexible space that is easily adaptable for the future

IMAGES









DRAWINGS & RENDERINGS

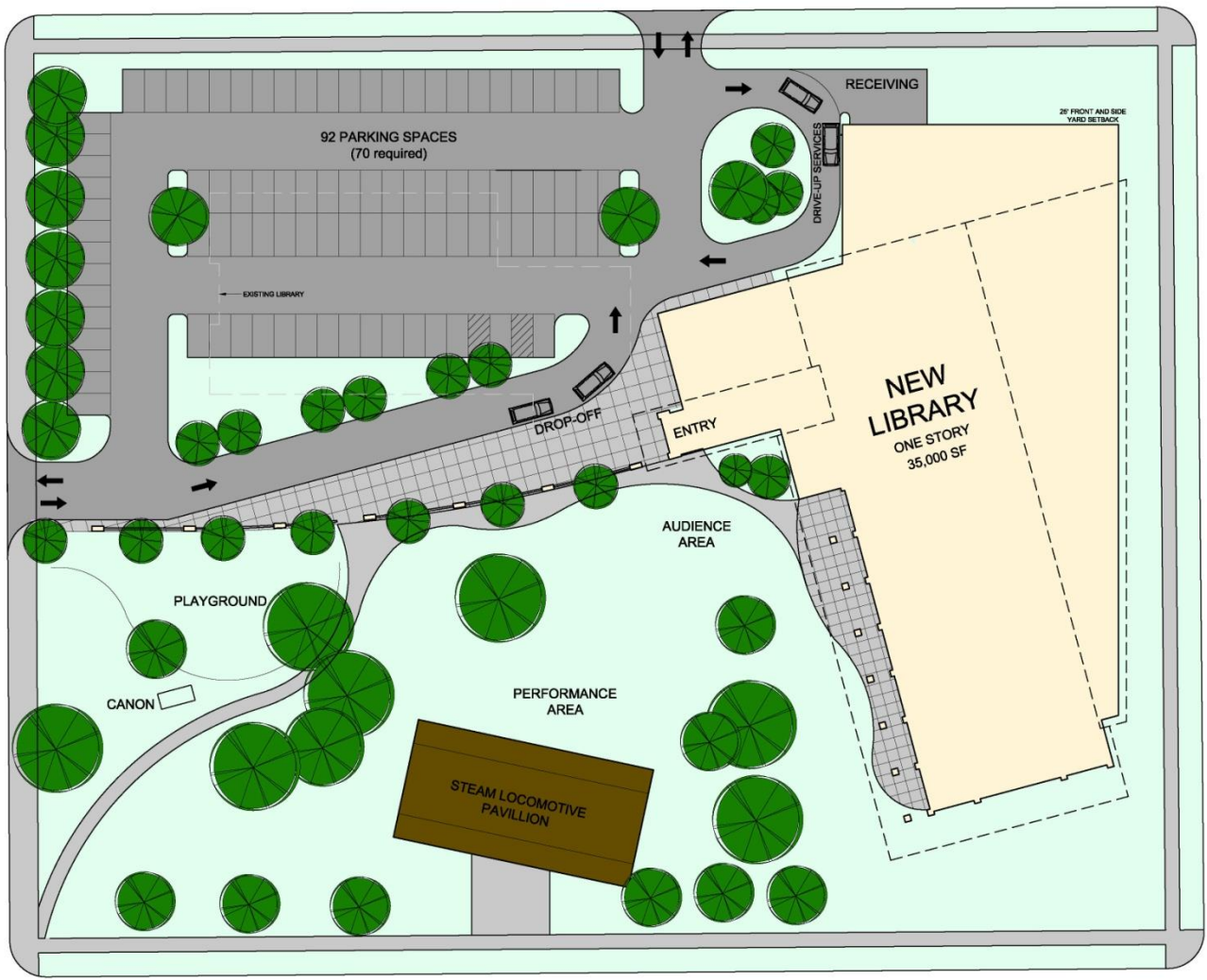


NORTH OAK STREET

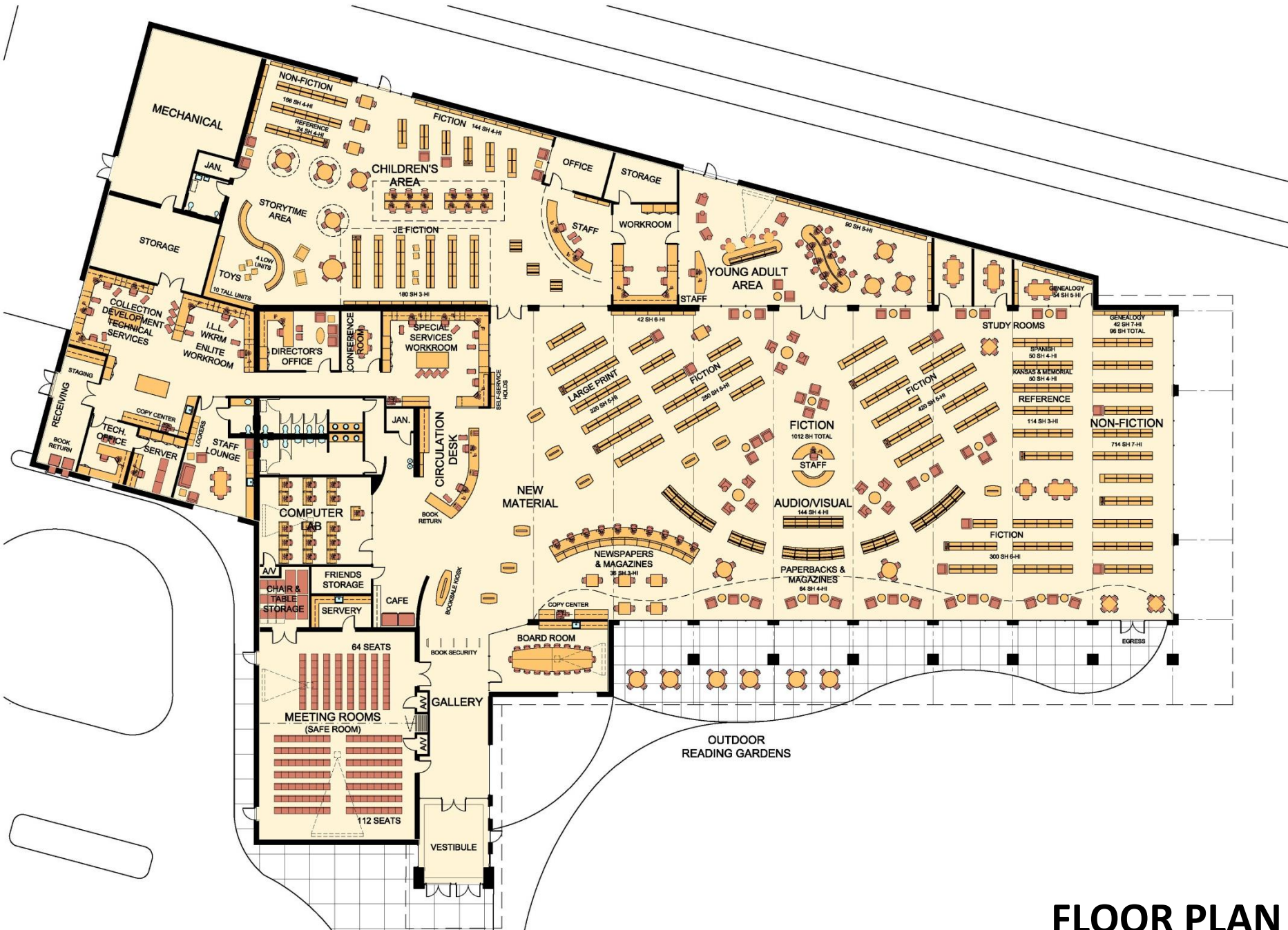
NORTH PINE STREET

EAST SEVENTH STREET

EAST BROADWAY STREET



SITE PLAN



FLOOR PLAN



AERIAL RENDERING



EYE-LEVEL RENDERING



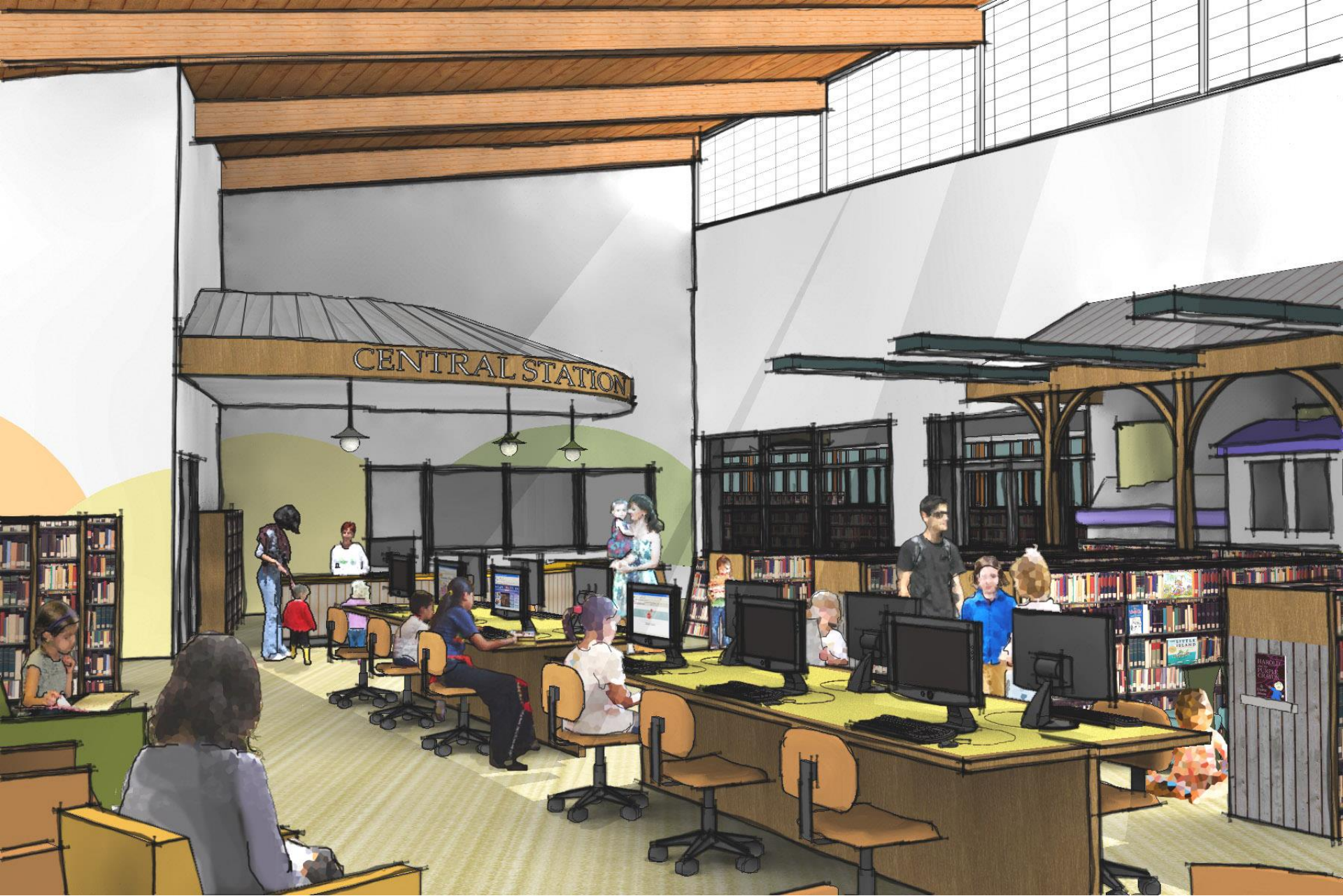












CENTRAL STATION

HANDS ON
LETTERS
CRAFTS

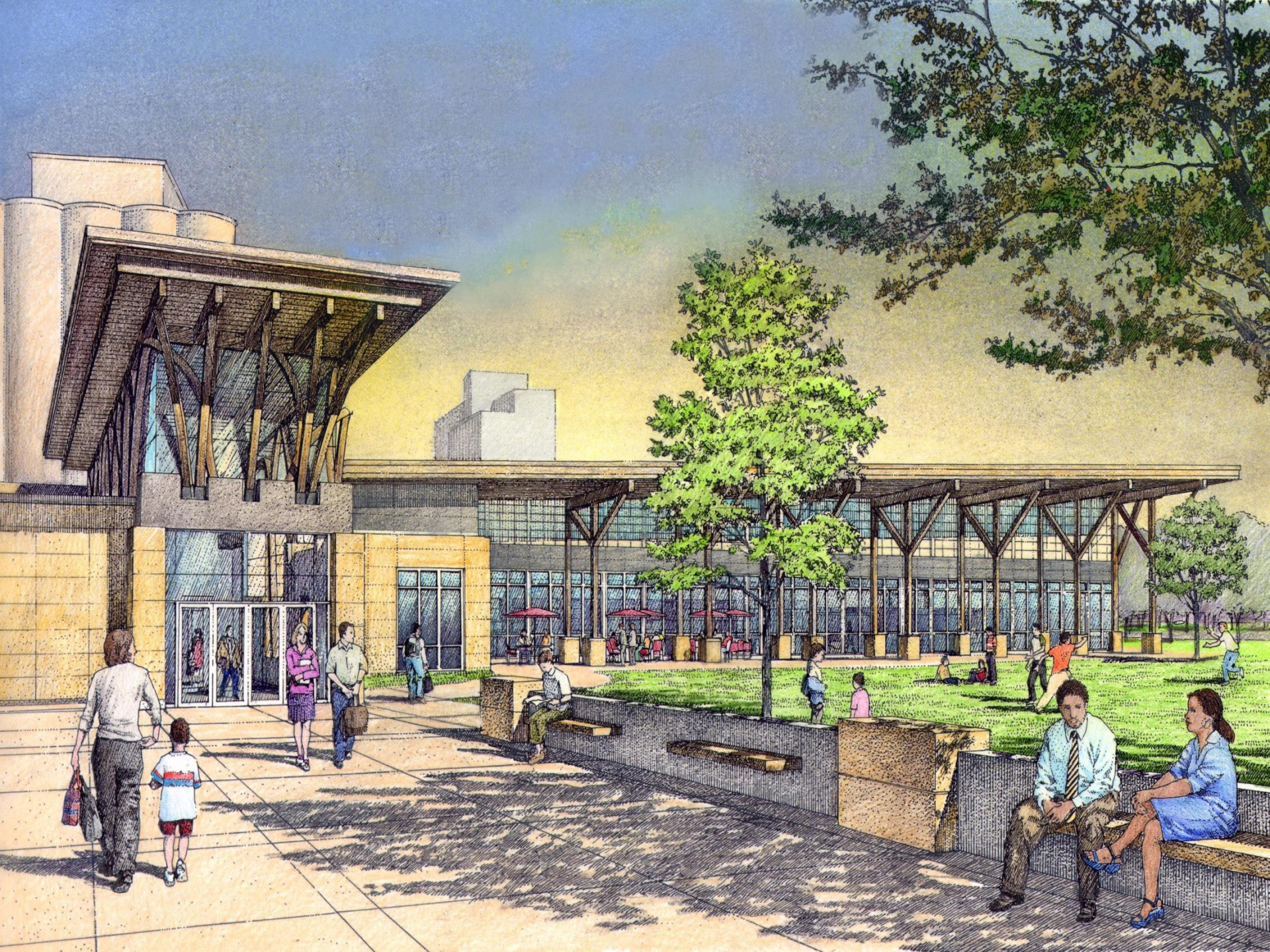


BUDGET INFORMATION

Budget Information

PROJECT BUDGET ANALYSIS

| | | |
|---------------------------------------|---|--------------------|
| 1. | Site Development & Demolition <i>demolition, site utilities parking, drives, walks, landscaping grading - raise library & lower parking</i> | \$860,000 |
| 2. | Building Construction <i>35,000 sf @ \$165</i> | \$5,775,000 |
| 3. | Library Interiors <i>(Cabinetry, Shelving, Furniture, Signage)</i> <i>35,000 sf @ \$30</i> | \$1,050,000 |
| 4. | LEED certification <i>2% of construction cost Not Included</i> | \$0 |
| 5. | Projected Escalation / Inflation <i>1.5% per year assume 2 years to mid point of construction</i> | \$232,280 |
| SUBTOTAL - CONSTRUCTION BUDGET | | \$7,917,280 |
| 6. | Administrative Costs <i>1% of construction budget Survey, Soil Borings, Testing Printing, Reimursable Expenses Agency Approvals, Advertisement for Bids Legal Fees, Builders Risk Insurance</i> | \$79,170 |
| 7. | Equipment Costs <i>2.5% of construction budget Building Security, Material Security Self Check Telephone System AV, Computers</i> | \$197,930 |
| 8. | Professional Fees <i>10% of construction budget</i> | \$791,730 |
| 8. | Miscellaneous Costs <i>.5% of construction budget Moving expenses Opening Day Collection?</i> | \$39,590 |
| 9. | Project Contingency <i>10% of construction budget</i> | \$791,730 |
| TOTAL PROJECT COST | | \$9,817,430 |



The NPL Concept Design presentation is available at www.newtonplks.org

We would appreciate hearing your comments, suggestions and questions about Concept Design Plans for the Newton Public Library. Please contact the Newton Public Library Board of Trustees or Library Director Marianne Eichelberger at:

- Newton Public Library, 720 N. Oak, Newton, KS 67114
- library@newtonplks.org
- 316-283-2890

Thank you for your interest in providing quality library services and programs into the future for the greater Newton Community.